



The Nurture Approach

Find out about a cost-effective approach to increasing attendance, reducing exclusions and tackling behaviour to improve your academic performance.

Addressing today's challenges in education...

As a senior leader in a multi-academy trust, we recognise that you're having to balance educational outcomes, recruitment, and retention, whilst also dealing with the pressing issues of rising absence, escalating exclusions, and increased mental health challenges for both students and staff.

The aftermath of Covid-19 and broader socio-economic challenges have led to the [rise in anxiety](#), [school absence](#), and [social and behavioural needs](#). This makes it incredibly hard to give children the education they deserve.

Over 4,000 schools nationwide have turned to nurtureuk to tackle these crises head-on.

“

“Nurture has been a substantial part of a success story in education in the city which can point to a clear reduction in pupil exclusions, an increase in attendance and a dramatic improvement in Glasgow establishments' capacity to hold onto the most vulnerable young people.”

[Glasgow Psychology Services Report, 2017](#)

Nurtureuk helps schools to improve behaviour, attendance and attainment by ensuring that every child is able to learn.

How can we help you?

Need proven ways to improve attendance and reduce exclusions? Our training in [Whole School Nurturing Approaches](#), underpinned by Quality First Teaching and accredited by CPD standards, supports schools to successfully reduce exclusions.

“

“This time last academic year we had made 15 Fixed Term Exclusions... so far this year we have made none [...] this is down to staff understanding the behaviour more, caring more, being more nurturing and emotionally tuned in” - Primary School

Looking for ways to demonstrate progress in addressing SEMH needs? The [Boxall Profile® Online](#) is the most popular measurement tool used by UK schools, recommended by the [Department of Education](#). We are the leading accredited provider in [Nurture Group training](#), an intervention recommended by Ofsted, Estyn and HMIE that can be used in conjunction with the Boxall Profile® to remove barriers to learning for the most vulnerable of pupils.

“

“Working with nurtureuk these past few months, we have seen the impact of the programme in developing strong connections, ensuring our pupils feel not just safe, but genuinely heard. Developing an inclusive and nurturing culture is essential for the progress and future opportunities of our pupils. The [nurture] programme has helped in enhancing this culture in all our schools.”

Marino Charalambous, CEO, North Star Community Trust



INCLUSIVE | MULTI ACADEMY TRUST

Transformative impact of nurture at the Inclusive Multi Academy Trust

James Roach, CEO Inclusive Multi Academy Trust

As CEO of the Inclusive Multi Academy Trust, I have witnessed first-hand the transformative power of the nurturing approach in our schools. Serving communities facing high levels of deprivation, our schools have become the central points of the communities, nurturing not just academic growth but the holistic wellbeing of our children, parents, and staff.

A key component of our nurturing approach is the Boxall Profile® Online. This invaluable resource helps us identify those who may otherwise go under the radar, enabling us to address gaps in their development and improve their life chances.

While academic performance and financial accountability remain crucial priorities, [...] the impact of this approach is evident in the **significant improvements we've seen in attendance, behaviour, and reduction in exclusions. Attendance rates have risen, persistent absenteeism has dropped substantially below national averages, and exclusions have decreased dramatically.**

Our nurturing ethos has become a driving force in attracting and retaining exceptional staff. **Being a National Nurturing School has had a tremendous impact on staff retention,** as our staff find purpose and satisfaction in an environment that prioritises the whole child.

Case studies from the Inclusive Multi Academy Trust



Using the Boxall Profile® to improve attendance in a MAT

Child A is in Reception, an only child whose mother is in the UK on a work visa, with no recourse to public funds and a history of domestic abuse. Child A's attendance was erratic, with many single days off. Analysis from the Boxall Profile® highlighted low scores in A-J.

Goal: Improve Child A's attendance month on month during the 2023/24 academic year using a relational approach supported by the Boxall Profile®.

Impact: Attendance improved from 73% in October 2023 to 86% in March 2024. Child A is now in school more regularly, accessing appropriate interventions in class, and is making progress as demonstrated by the Boxall Profile®.

Effective use of the Boxall Profile® and Nurture Groups on a child with high SEMH needs

Child X is in year 5. He has significant trauma, ACES and involvement from children's services. He indicated he does not like school and has irregular attendance. The Boxall Profile® demonstrates that Child X has a high level of developmental need, is working significantly below age-related expectations, has low self-esteem and a fear of failure. He does not trust adults and has few positive peer relationships.

Goal: Improve Child X's attendance and ensure Child X is ready to learn.

Impact: Child X started Year 6 with no apparent SEMH needs. This is after attending Nurture Groups four mornings a week and implementing the Boxall Profile® personalised learning plan. Child X is now accessing the curriculum and is happy in school.

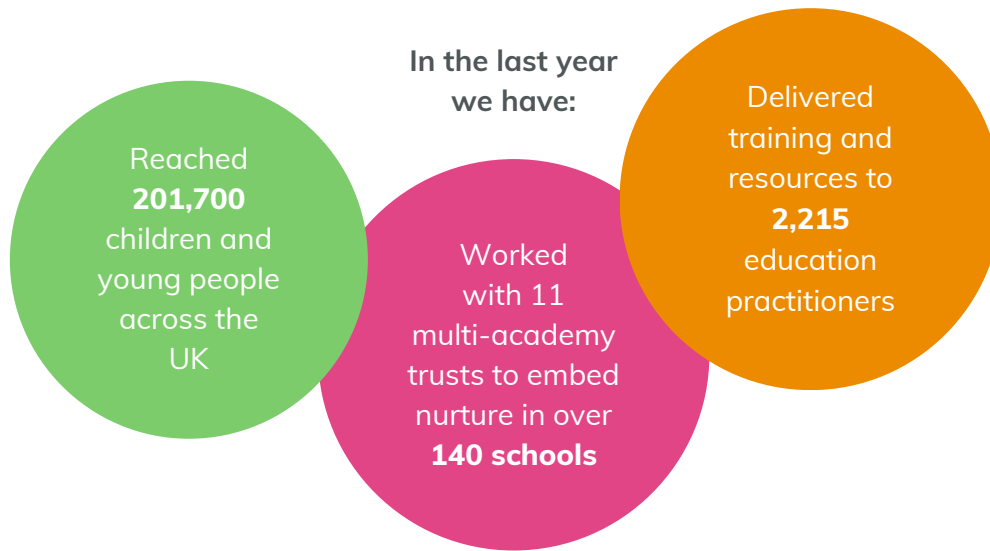
“

“I didn't like coming to school before, but I love nurture, they make the work better for me to understand. Mrs Goodall listens to me and when I am angry, she has shown me what to do. I can use my network hand, go to the calm corner or draw or journal.” - Child X

Get in touch today for discounts on nurture training

We can offer bespoke pricing and delivery for your multi-academy trust because we understand that every trust is different.

Wherever your schools are on their nurturing journey, our experienced team can provide you with the support you need. Whether you're operating across multiple settings throughout the country, or are a small Trust of local schools, we will work with you to support your staff to embed a nurturing approach that is tailored to your trusts' values.



We are an experienced and trusted provider. We have been commissioned by local authorities to deliver large-scale programmes, including the Nurturing Kent Programme, and the Inclusive and Nurturing Schools Programme which aims to reduce exclusions as part of the London Violence Reduction Partnership. Read more about our programmes on [our website](#).

“

“The school is a community now and we are very inclusive. We are highly trained to meet the varied needs of all our pupils in a world where waiting lists and high thresholds would mean pupils are at risk.”

- Secondary School

Unlock the full potential of your multi-academy trust with [nurtureuk](#).

Get in touch today by emailing business@nurtureuk.org

